

BASS TIPS

BROUGHT TO YOU BY BASSBOOKS.COM
& JAIMEDAVIDVAZQUEZ.COM

PALM MUTING

Palm muting is a technique where the note(s) is partially muted by the palm of the right hand lightly touching the string(s) just before the bridge. This is a very useful technique that will give you a "chunky" sound.

**The palm muting technique will introduce a whole new dynamic to your basslines.*

Fig. 1 - Palm Mute

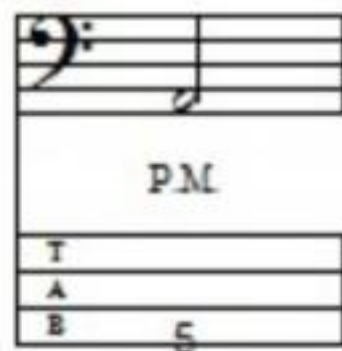


Fig. 2 - A reggae groove using the palm muting technique.

The musical notation is in 4/4 time. The top staff is a bass clef with a reggae groove. Above the staff are four chords: Am7, G7, Am7, and G7. The groove consists of eighth notes and quarter notes. Below the staff, there are two lines of notation. The first line is a dotted line with 'P.M.' written at the beginning and end, indicating palm muting. The second line is a fretboard diagram with fret numbers: 5 5 7 7 7 3 3 3 3 5 5 7 7 7 7 3 3 5 3.