

Here is an example of ballad playing. Notice how the line is balanced with whole, half, quarter and, occasionally eighth notes. Pay attention to how the tone of the bass says more than the actual notes.

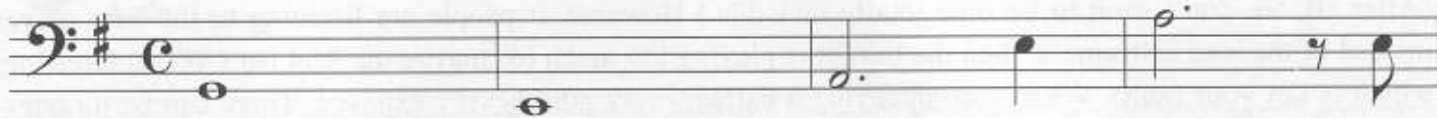
27

Gmaj<sup>7</sup>

Em<sup>7</sup>

A<sup>7</sup>

∕



Am<sup>7</sup>

B<sup>7</sup>

E<sup>7</sup>

A<sup>7</sup>

D<sup>7</sup>

Gmaj<sup>7</sup>

Em<sup>7</sup>

Am<sup>7</sup>

D<sup>7</sup>

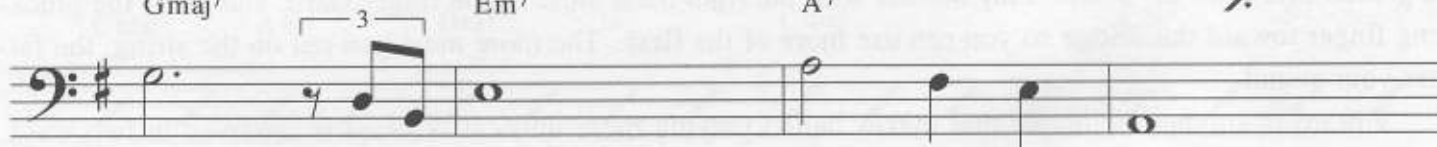


Gmaj<sup>7</sup>

Em<sup>7</sup>

A<sup>7</sup>

∕



Am<sup>7</sup>

B<sup>7</sup>

E<sup>7</sup>

A<sup>7</sup>

D<sup>7</sup>

Gmaj<sup>7</sup>

Db<sup>7</sup><sup>#11</sup>



Cmaj<sup>7</sup>

F<sup>7</sup>

∕



Gmaj<sup>7</sup>

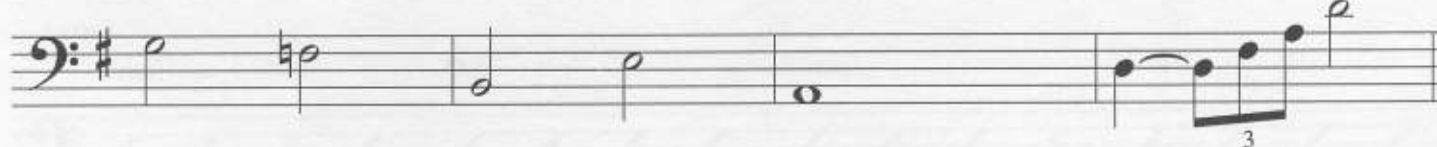
F<sup>7</sup>

Bm<sup>7</sup>

E<sup>7</sup>

Am<sup>7</sup>

D<sup>7</sup>



Gmaj<sup>7</sup>

C<sup>7</sup><sup>#11</sup>

Bm<sup>7</sup>

Em<sup>7</sup>

A<sup>7</sup>

∕



Am<sup>7</sup>

B<sup>7</sup>

E<sup>7</sup>

A<sup>7</sup>

D<sup>7</sup>

Gmaj<sup>7</sup>

C<sup>7</sup><sup>#11</sup>

Gmaj<sup>7</sup>

