

# Ain't Too Proud to Beg

Words and Music by Edward Holland and Norman Whitfield

Verse

Moderately ♩ = 126

Bass: w/ Bass Fig. 1, 2nd, 3rd & 4th times

C

F

C



1. I know - you wan-na leave me, but I re - fuse to let you go. -  
2., 3., 4. See Additional Lyrics (Oo. \_\_\_\_\_)

F

C

F

C



If I have to beg, plead for your sym-pa-thy, I don't mind - 'cause you mean that  
Oo. \_\_\_\_\_

## Chorus

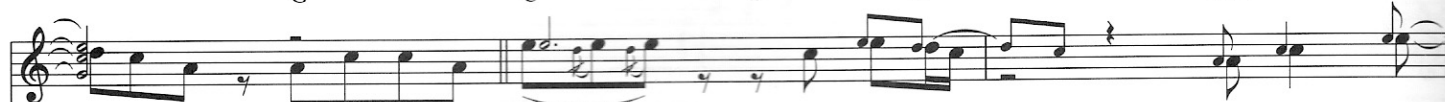
G

C

F

C

F/A

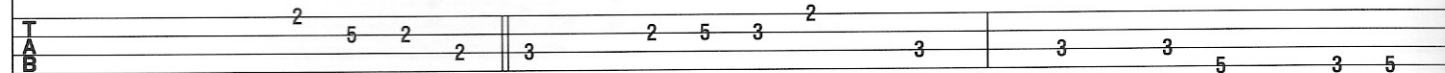


much to me. Ain't too proud to beg, and you know it. Please don't leave -  
(Oo, sweet dar - lin', please don't leave -

Bass



*mf*



C

F

C

F/A

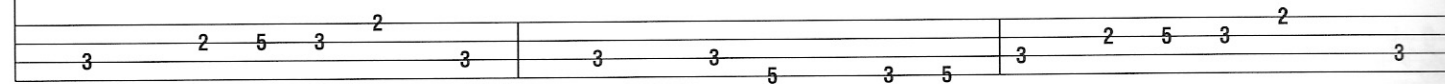
C

F

C



me, girl. Ain't too proud to plead, ba - by, ba -  
me, girl. Don't you go. Oo, ba - by ba -



### Bass Fig. 1

play 3 times

