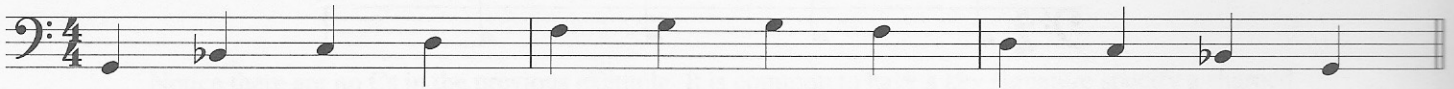


Minor-Pentatonic Scale

The *minor-pentatonic scale* will be used for a large percentage of your funk bass playing. This scale consists of the root, minor third, fourth, fifth, and the minor seventh scale degrees. The following example is the G minor-pentatonic scale.

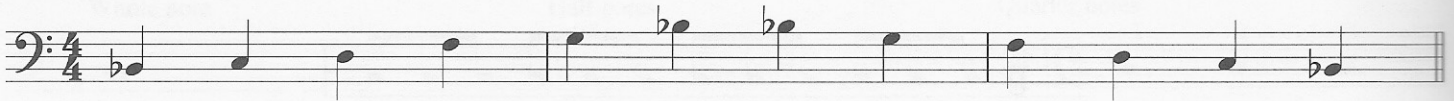
G Minor-Pentatonic Scale



Major-Pentatonic Scale

The *major pentatonic scale* will also be used for a large percentage of your funk bass playing. This scale consists of the root, second, third, fifth, and sixth scale degrees. The following example is the B \flat major-pentatonic scale. Note: the B \flat major-pentatonic scale uses the same notes as the G minor-pentatonic scale!

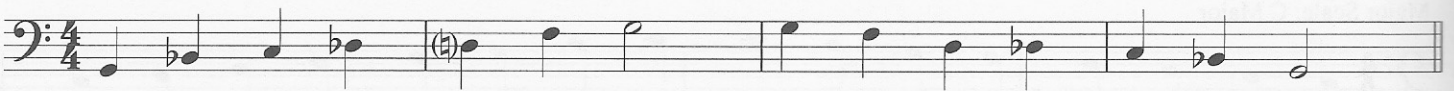
B \flat Major-Pentatonic Scale



Blues Scale

The *blues scale* is also very common in funk bass line construction. It is made up of the same notes as the minor-pentatonic scale with the addition of the flatted fifth scale degree. The following example is the G blues scale.

G Blues Scale



Chords

A *chord* is made when three or more notes are sounded simultaneously. Often chords are made up of the root, third, fifth, and seventh scale degrees. Below are several chords commonly used in funk styles.

Major Triad and Major 7

Major Triad and Dominant 7

Minor Triad and Minor 7