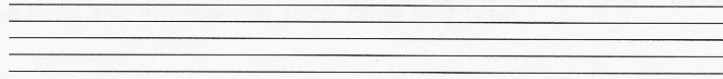


THEORY REVIEW

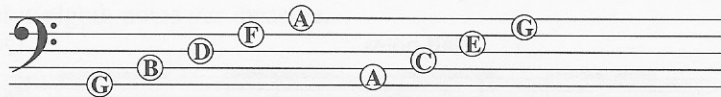
Before you start lesson 1, you should understand the following topics.

Notation

Notes are written on a *staff*.

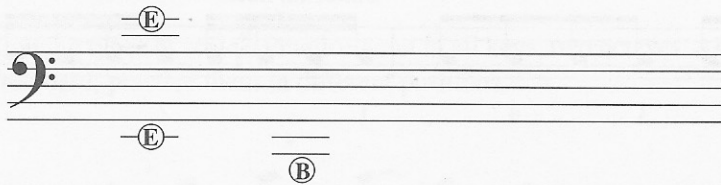


Bass music is usually written using the *bass clef* staff. Here are the notes for the lines and spaces in bass clef.



Ledger Lines

The staff can be extended with *ledger lines*.



Accidentals

Accidentals before notes raise or lower the pitch.

- b *Flat*: next note down (half step, or one fret down)
- # *Sharp*: next note up (half step up, or one fret up)
- ♮ *Natural*: cancels a flat or sharp

Key Signatures

To indicate a tune's key, and to show which notes always get sharps or flats, use a key signature. Accidentals on the lines and spaces in the key signature

