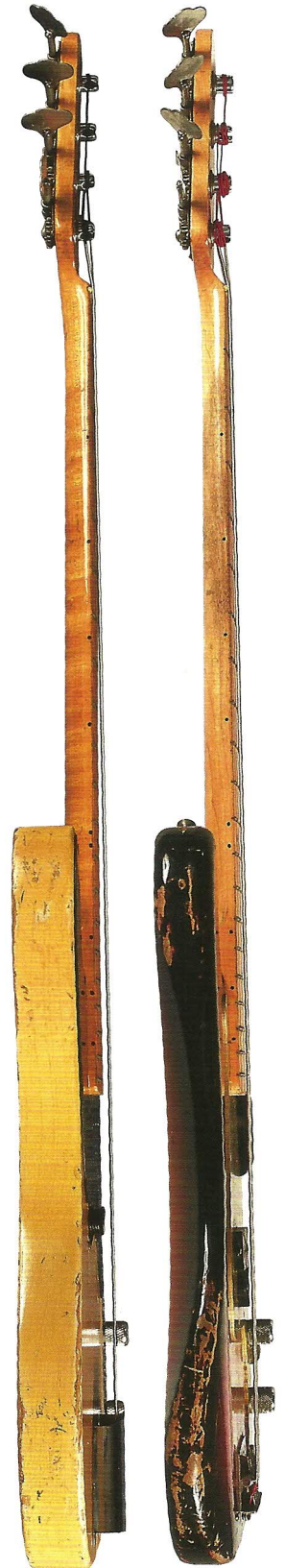


THE PRECISION'S PROGRESS



■ These two side views (right) illustrate a key difference between a Fender Precision of the early 50s and one of the late 50s. They show a slab-body '51 bass (left) and the contoured '57 version (right). Into the 60s, and groups started to focus on the power of the lineup of two guitars, bass, and drums. A good example of this was the top American instrumental outfit The Ventures. On this album cover (above) Nokie Edwards crouches down among his bandmates to play his late-50s Precision Bass.

