

Bass Line Construction

First lets take a look at how to build a bass lines. Each beat of the measure has a specific type of note that should be used. The first beat of each measure should contain the root of the chord (See Example 1). The 2nd quarter note of the measure should contain either a diatonic or chromatic note that leads by step into beat 3 (See Example 2). The 3rd quarter note of the measure should be either a chord tone (it's often the root) or a diatonic note of the chord (i.e. the root, 3rd, 5th, or 7th) (See Example 3). The 4th quarter note of the measure should contain either a diatonic or chromatic note that leads by step into the next chord (See Example 4).

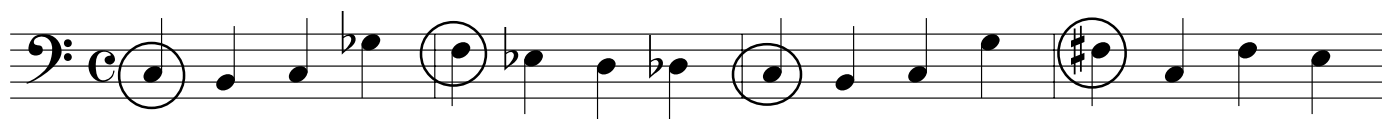
Example 1

C7

F7

C7

F#7



Example 2

C7

F7

C7

F#7



Example 3

C7

F7

C7

F#7



Example 4

C7

F7

C7

F#7

